

ET MODULE

- Positive Tolerance
- 48 Hour Response
- Local Technical Support
- Local Warehouses
- German manufacturing techniques
- Product Liability Insurance
- More than 100MW Reference
- High Quality Raw Materials
- Outstanding Performance
- Enhanced Design for Easy Installation and Long Term Reliability
- Custom Design with Wide Power Selection Down to 5W

The logo for ET Solar, featuring the letters 'ET' in a large, stylized blue font, with the word 'Solar' in a smaller, blue sans-serif font to its right.

ET Solar

ET MODULE

ET-M53685 85Wp
 ET-M53680 80Wp
 ET-M53675 75Wp
 ET-M53670 70Wp

UL1703



SPECIFICATIONS

Model type	ET-M53685	ET-M53680	ET-M53675	ET-M53670
Peak power (Pmax)	85W	80W	75W	70W
Cell type	MonoCrystalline Silicon, 125mm x 125mm			
Number of cells	36 cells in a series			
Weight	8.2 kg (18.1lbs)			
Dimensions	1205×545×35mm(47.44×21.46×1.38inch)			
Maximum power voltage (Vmp)	18.05V	17.64V	17.40V	16.90V
Maximum power current (Imp)	4.71A	4.54A	4.31A	4.14A
Open circuit voltage (Voc)	21.94V	21.88V	21.73V	21.45V
Short circuit current (Isc)	5.29A	4.98A	4.72A	4.45A
Maximum system voltage	DC 600V			
Temp. Coeff. of Isc (TK Isc)	0.06 %/°C			
Temp. Coeff. of Voc (TK Voc)	-0.397 %/°C			
Temp. Coeff. of Pmax (TK Pmax)	-0.549 %/°C			
Normal Operating Cell Temperature	44.4±2°C			

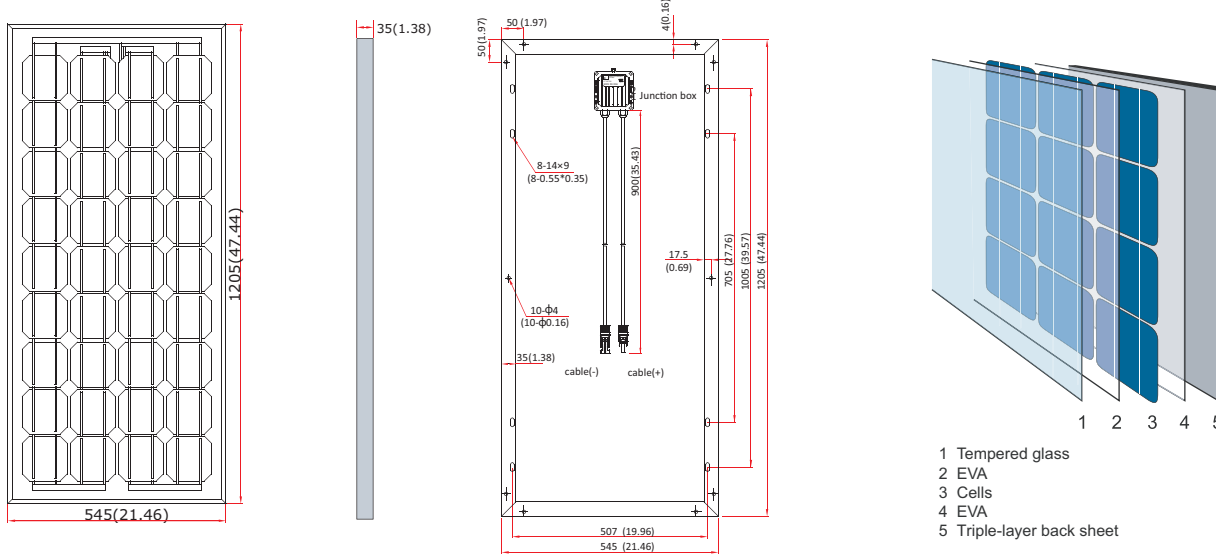
Note: the specifications are obtained under the Standard Test Conditions (STCs): 1000 W/m² solar irradiance, 1.5 Air Mass, and cell temperature of 25 °C.

Please contact support@etsolar.com for technical support.

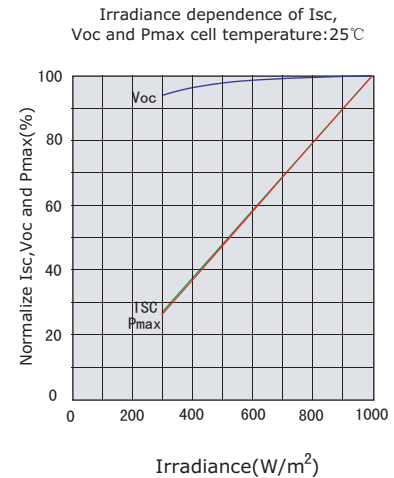
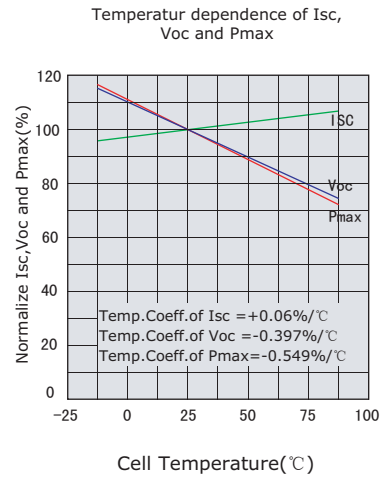
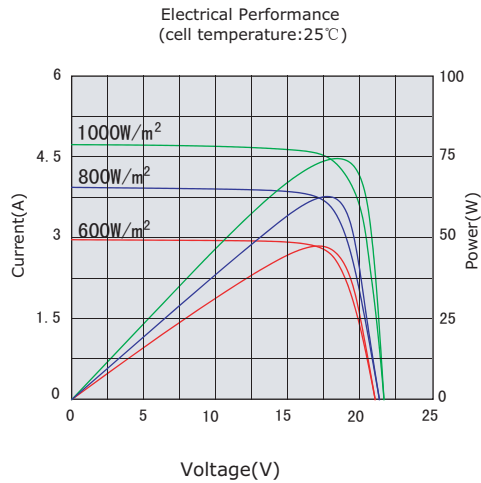
ET Module

ET-M53685 ET-M53680 ET-M53675 ET-M53670

PHYSICAL CHARACTERISTICS Unit:mm (inch)



ELECTRICAL CHARACTERISTICS





● **Headquarters (ET Solar Asia)**

Nanjing

Add: 24F, A2 World Trade Center Mansion,
67 Shanxi RD, Nanjing 210009, China

Taizhou

Add: 97 Jiangzhou South RD, Taizhou 225300, China

Tel: +86 25 8689 8098

Fax: +86 25 8689 8097

E-mail: sales@etsolar.com

● **Korea Office**

Add: B-605, Ssangyong IT tween tower, 442-5,

Sangdaewon-Dong, Seongnam City,

Kyunggi-Do, Korea

Tel: +82 31 732 4131

Fax: +82 31 732 4132

E-mail: sales@etsolar.com

● **ET Solar Europe**

Add: Im Munich City Tower,
Landsbergerstr. 110-114, D-80339,
Munich, Germany

Tel: +49 89 500 9405-0

Fax: +49 89 500 9405-99

E-mail: sales@etsolar.de

● **Italy Office**

Add: Via Boezio 6, 00193 Roma, Italy

Tel: +39 0632 803428

Fax: +39 0632 803400

E-mail: sales@etsolar.it

● **ET Solar USA**

Add: 4900 Hopyard Road, Suite 290,
Pleasanton, CA 94588, USA

Tel: +1-(925)-460-9898

Fax: +1-(925)-460-9929

E-mail: sales@etsolar.us

www.etsolar.com